



**ASTER**



## CONTENT

Building

Venue

About us

Venue details

Formats

Technical details

Additional services

Gallery

## BUILDING

At number 30 Gran Vía Street stands a sumptuous building since 1924, a work of Teodoro Anasagasti and his father-in-law José López Sallaberry, -also architects of the well-known Paris-Madrid building-, which still today harmoniously combines the classical with the contemporary.

It belongs to the second section of the Gran Vía, then called Bulevar de Pi y Maragall. It is a set of three united buildings, a symbol of the culture and power of the time. The building stands out for its dark blue glass and its triple arched entrance on the street level.





## ARCHITECTURE

ASTER presents a duplex of 225 square meters and terrace, basing its contemporary lines on the High-Tech architectural movement, a style that predominated in the 70's.

The windows and views are a clear example of the movement that revolutionized the construction of buildings, revitalizing space through industrial materials.

Its fifteen floors offer the viewer 360-degree views over the main artery of Madrid: La Gran Vía.

## VENUE DETAILS

ASTER is located at ground level, on Madrid's main thoroughfare: an open floor plan, multidisciplinary event space open to anyone who wants to enjoy an exclusive and distinctive atmosphere.

From the fourteenth floor, the glass window that surrounds a 225 square meter duplex with terrace, offers a panoramic view of the capital without architectural barriers.





## ABOUT US

We organize all types of events and corporate actions, adapting the space to the needs and desires of our clients' proposals.

We offer premium advice, including comprehensive support throughout the development and execution of the same.



## VENUE DETAILS

Max capacity 50 ppl at the same time\*

Duplex

Terrace

Office

2 W.C.

WI-FI

\*(including all staff in this figure: waiters, agency, room staff, technicians, etc.).

ASTER

GI  
GRUPPO INIMITO



## FORMATS

- Theater 40 ppl
- Classroom shape 30 ppl
- Imperial 20 ppl
- U Format 25 ppl
- Cabaret\* 35 ppl
- Semicircle 30 ppl

\*Quote needed







THEATER



CLASSROOM SHAPE



IMPERIAL



U FORMAT



CABARET



SEMICIRCLE



SPEAKERS FORMAT I



SPEAKERS FORMAT II



**TECHNICAL DETAILS\***

1 TV Full HD 86"

2 TV Full HD 65"

Microphones

HDMI Universal cable

HDMI Connection

Integrated sound system





## ADDITIONAL SERVICES\*

Catering service

Hostess services

Audiovisual technicians

Extra TVs

Sound system

Videoconferences

Streaming

Simultaneous translation

Parking

Visual merchandising

\*Quote needed



## GALLERY

Venue

Furniture

Building

Street views

Floor plan

ASTER

GI  
GRUPPO INFORMATICO



FLOOR 14































FLOOR 15











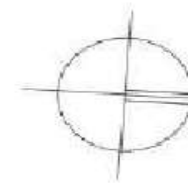
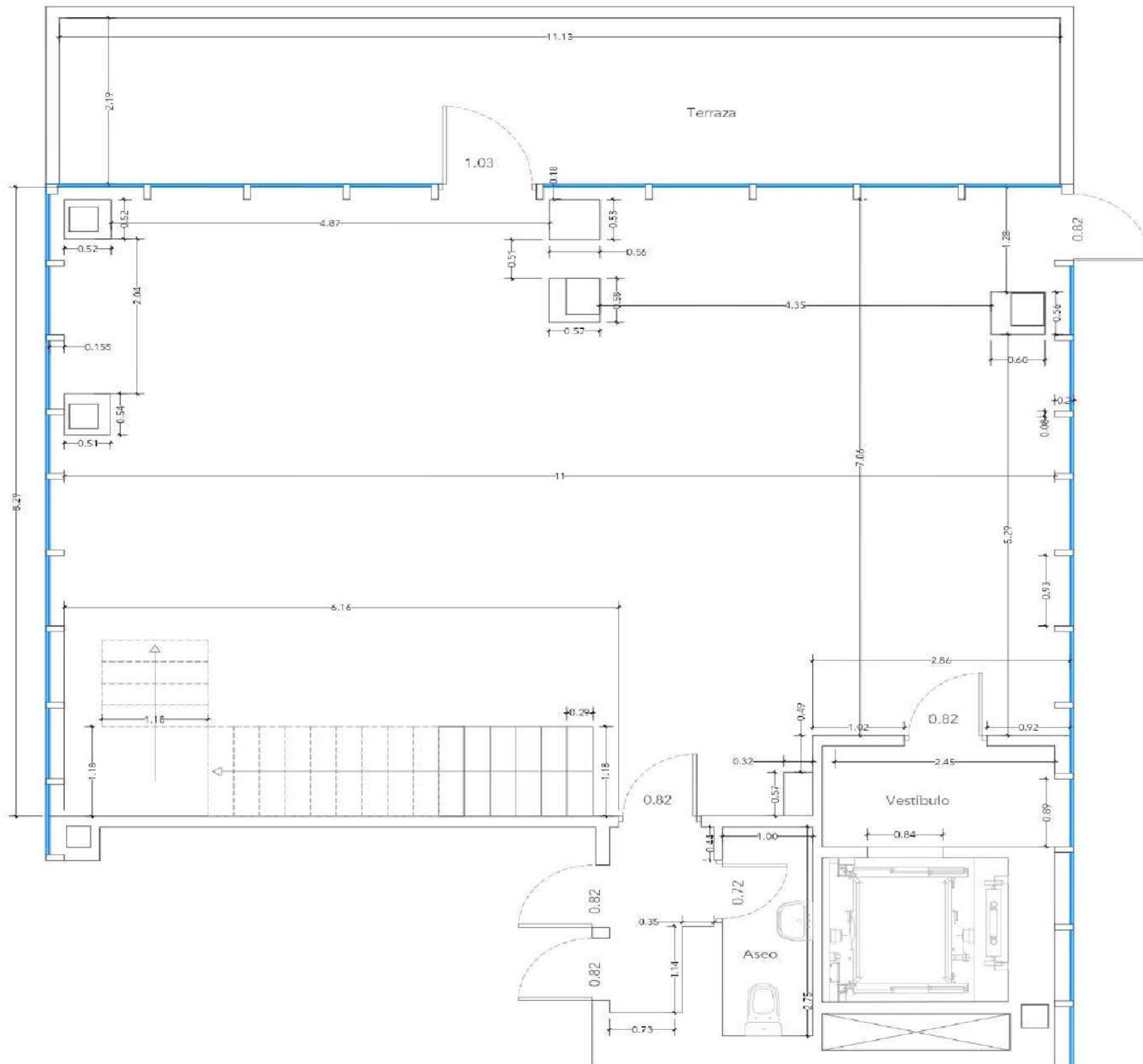






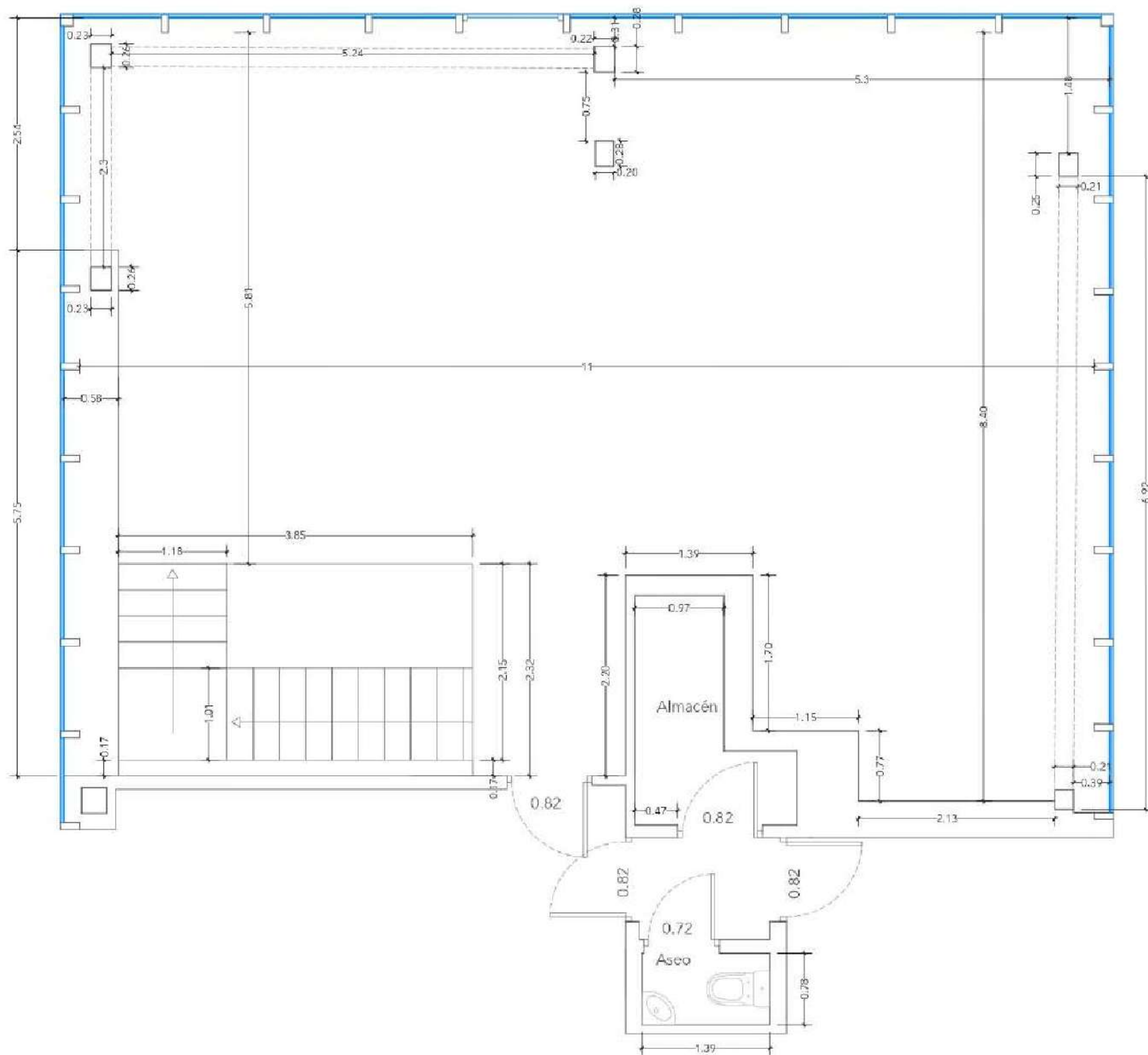
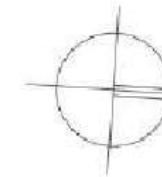






## FLOOR 14

Levantamiento de local en edificio de uso terciario de oficinas		
LOCALIZACIÓN	NOMBRE DE PLANO	FECHA
Calle Gran vía 30 MADRID	Planta 14 Coles	Febrero 20
(Madrid)		ESCALA 1:50




FLOOR 15

Levantamiento de local en edificio de uso terciario de oficinas		
LOCALIZACIÓN	NOMBRE DE PLANO	FECHA
Calle Gran vía 30 MADRID	Planta 15 Colas	Febrero 20
(Madrid)		ESCALA 1:50



ASTER

**Grupo Inedito**  
El cielo de Madrid

 [www.espacioaster.com](http://www.espacioaster.com)

 +34 603 706 181

 C/ Gran Vía, 30 Planta 14 (28013)